



Polymer Modified Repair Mortar

It is a cement-based repair mortar with high elasticity, tightness and adhesion strength without cracking. It is modified with polymer and fiber additives. It is an extremely resisting repair mortar for low internal forces and thick applications. It is used in concrete repairs, ground preparation before waterproofing, the filling of holes and for chamfers.

USAGE AREAS

- Before surface waterproofing,
- Concrete, plaster and screed repairs,
- Filling of the segregation and the screw holes,
- Used in construction chamfers and repairs.

APPLICATION INFORMATION

Surface Preparation : Application surfaces must be clean and humid. All impurities that affect the adhesion like dirt, oil, sludge, rust, etc. should be removed. Crack or segregations to be repaired should be igged at least 2 cm depth. Before application, we recommend applying of **ISONEM D10 LATEKS** (200 mL/m²) on surfaces that may be exposed to dirt, rust, metal, etc., or on surfaces that have difficulty in adherence. Once latex applied surfaces are dry and slightly sticky, **ISONEM M 03** should be applied.

Application Method: **ISONEM M03** elastic mortar (20 kg) and 4 Lt of clean water are mixed homogeneously in a plastic container with a 400 rpm mixer. If mixing is done manually, it should be made in little amounts. **ISONEM D10 LATEKS** can be added to increase the adherence and water impermeability of **ISONEM M 03** elastic mortar. This ratio can be made by adding 1kg of **ISONEM D10 LATEKS** to a bag of **ISONEM M03** (20kg) and adding 3 Lt of water. The mixture is applied to the surface by trowel or spraying method. In very hot and very cold weather applications should be paid attention and applications made in extreme temperatures should be humidified at certain intervals.

COLOR : Gray

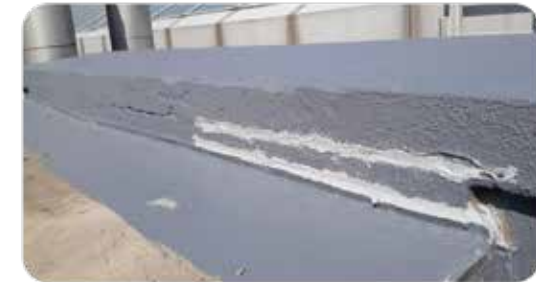
CONSUMPTION : 20 kg/m² for 1 cm thick plaster, As filler 1 kg for 500 ml space, 1 cm thick plaster 1 m²/1 kraft bag.10 lt/20 kg bag filler. Space for Min 20 kg / (1 craft bag)

PACKING : 20 kg kraft bag

STORAGE : 24 months in original, unopened package, cool and dry environment

TECHNICAL SPECIFICATIONS

- **Type:** Cement based polymer modified
- **Compressive strength (Mpa):** ≥ 10, CLASS R1
- **Adhesive bond (Mpa):** ≥ 0,8



IMPORTANT
The surface should be protected from rain, water, mechanical loads and impacts for 24 hours during and after the application.

General Features

- Provides %100 Waterproofing
- A2 S1 d0 Fire Class
- Elastic
- Fast Drying

Application Conditions and Risks

Things to consider during and after the application

The application surfaces must be clean and free from dirt, oil, rust etc..

Applicable temperature: Between +5 and +35°C

ISONEM products for surface preparation: Product auxiliary component D10 LATEX.

Surface Floor	Concrete	Marble, Granite	Raw wood	Tile & Ceramic	Membrane, Shingle etc.	Steel & Metal
Application	Filling material	X	X	X	X	X
Surface Humidity	Dry/Humid surface	X	X	X	X	X
Application Tools	Trowel	X	X	X	X	X
Primer Usage	X	X	X	X	X	X
Primer.Conspt	X	X	X	X	X	X
Product Usage	Plaster/ Filler	X	X	X	X	X
Product.Conspt	20 kg/m ² (1 cm plaster)/ 1 kg (10 lt Filler)	X	X	X	X	X
Betw.Two.Coats	4 Hours	X	X	X	X	X
Application	24 Hours	X	X	X	X	X



The information given in this technical data sheet has been prepared according to our knowledge, experiment results, and experiences. The correct and successful implementation of our products is completely beyond our control and responsibility. For this reason, our responsibility is limited to the quality of our product only, and this manual overrides all previous technical statements, descriptions and label information.

“ Our products are not classified by Biocidal Products Regulation ”