

ISONEM® MULTICOLOR PAINT

Scan the QR code
for product
application video



Special Paints

Water Based Multicolor Decorative Paint

ISONEM MULTI COLOR PAINT is water and acrylic based decorative interior and exterior wall paint that can have two, three or more colors depending on the request and that provides a multicolored granite effect after drying. It is a special paint that contains the desired colors staying as paint in water emulsion (gel). Basically, the paint contains colored particles (pigments) in the form of capsules so they do not mix into each other. Multicolored paint capsules, which do not intermingle in the paint form a multicolored coating after drying. The sizes of the colored particles range from 0.5 mm to several millimeters. In the case, spongeability is desired for interior applications and in exterior applications, it must be protected by ISONEM MS POLYMER transparent waterproofing application. ISONEM MULTI COLOR PAINT is completely water-based, nature-friendly, VOC free and extremely simple to apply.

PROPERTIES

Water-based, environmentally friendly. · Multicolored decorative overlay. · It is easy to use. · Dries quickly.

TECHNICAL SPECIFICATIONS

Type : Water-based, acrylic-based, single component
 Appearance : Multi-colored, viscous liquid
 Density (25°C, g/mL) : 1.00 ± 0.10
 Viscosity (25°C, mPa.s) : 1500 – 2500
 pH (25 ° C) : 7.5 - 8.5
 Solids [% by weight] : 25 ± 2
 Flash Point (°C) : Not applicable
 Through drying : 1 - 5 hours [depending on the size of the color particles.]

APPLICATION INFORMATION

Surface Preparation : The application surface must be dry, clean, smooth, stable and free of dust. During application, the air temperature should be between 5 and 30°C.
Application Method : Preferably, ISONEM Multi Color Paint should be applied with a high-volume, low-pressure HVLP spray gun. If you desire to apply by a roller, the surface must be roughened by applying one or two coats of ISONEM SB Super Component product. After the surface has been roughened, apply ISONEM MULTI COLOR PAINT as a single coat with a coral roller without passing over the paint too much.
Thinning/Mixture Ratio : Ready to use, no thinning is required
Paintable (Coverage) Area : Depending on the surface and application method, an area of 2 - 10 m² can be painted with 1 kg of paint

Drying Time : Through drying is completed in 4 - 5 hours. (Do not apply below 5 ° C.)

Recommended Application Apparatus : HVLP spray gun or coral roller

Packaging : 5 kg plastic bucket

Consumption : 10 - 50 m² Plastic Pail

COLOR : Produced as a mixture of the desired colors.

STORAGE : 24 months in original, unopened package, cool and dry environment.

IMPORTANT
 The surface should be protected from rain, water, mechanical loads and impacts for 24 hours during and after the application.

General Features

- Water Base Environmentally Friendly
- Economic
- B S1 d0 Fire Class
- Multi color, Decorative Paint
- Fast Dry

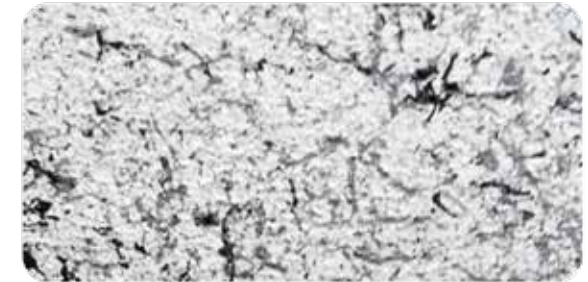
Application Conditions and Risks

Things to consider during and after the application : The application surfaces must be clean and free from dirt, oil, rust etc..

Applicable temperature : Between +5 and +35°C

ISONEM products for surface preparation : For rough surface : ISONEM SB SUPER COMPONENT

Application Requirement : The surface should be roughened for roller application. ISONEM Ms Polymer is recommended as protective topcoat



Surface Floor	Concrete	Marble, Granite	Raw wood	Tile & Ceramic	Membrane, Shingle etc.	Steel & Metal
Application	Vertical	X	X	X	X	X
Surface Humidity	Dry	X	X	X	X	X
Application Tools	Coral Roller (synthetic epoxy), suitable spray	X	X	X	X	X
Primer Usage	X	X	X	X	X	X
Primer.Conspt	X	X	X	X	X	X
Product Usage	1 Layer	X	X	X	X	X
Product.Conspt	0,1 - 0,5kg/m ²	X	X	X	X	X
Betw.Two.Coats	X	X	X	X	X	X
Application	5 Hours	X	X	X	X	X



The information given in this technical data sheet has been prepared according to our knowledge, experiment results, and experiences. The correct and successful implementation of our products is completely beyond our control and responsibility. For this reason, our responsibility is limited to the quality of our product only, and this manual overrides all previous technical statements, descriptions and label information.

" Our products are not classified by Biocidal Products Regulation "